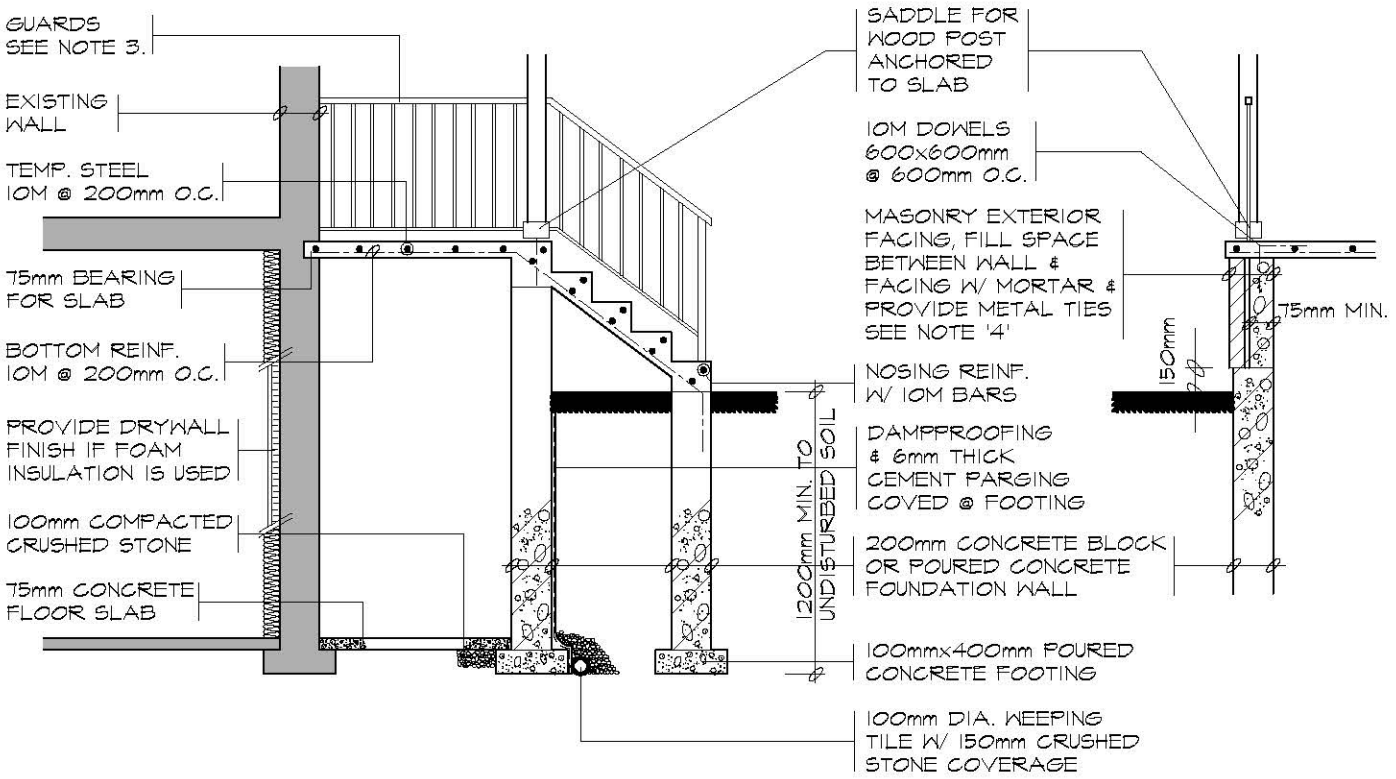


FOUNDATION PLAN

GROUND FLOOR PLAN



SECTION 'A'

SECTION 'B'

GENERAL NOTES

1. EXTERIOR STAIRS
 - 125mm - 200mm RISE
 - 210mm - 355mm RUN
 - 235mm - 355mm TREAD
 - STEPS ARE TO BE UNIFORM THROUGHOUT FLIGHT
2. HANDRAILS
 - ARE REQUIRED WHERE STEPS HAVE MORE THAN 3 RISERS. HANDRAIL HEIGHT 800mm - 965mm
3. GUARDS
 - ARE REQUIRED AROUND CONCRETE SLAB IF MORE THAN 600mm ABOVE GRADE & ON BOTH SIDES OF STAIRS
 - MINIMUM 900mm HIGH FOR STAIRS
 - MINIMUM 900mm HIGH FOR PORCHES UP TO 1800mm ABOVE GRADE.
 - MINIMUM 1070mm HIGH FOR GREATER HTS.
 - MAXIMUM 100mm BETWEEN PICKETS AND NO MEMBER DESIGNED TO FACILITATE CLIMBING BETWEEN 140mm & 900mm
4. MASONRY TIES
 - WHEN BRICK FACING IS USED ABOVE GROUND LEVEL, PROVIDE 0.76mm THICK & 22mm WIDE CORROSION RESISTANT METAL TIES @ 600mm HORIZ. & 500mm VERTICAL
5. FOUNDATION WALLS
 - THICKNESS OF UNREINFORCED FOUNDATION WALLS LATERALLY SUPPORTED AT THE TOP ARE DEPENDANT UPON HEIGHT OF FINISH GRADE ABOVE BASEMENT FLOOR
 - UNIT MASONRY THICKNESS 190mm - MAX. HEIGHT 1200mm
 - UNIT MASONRY THICKNESS 240mm - MAX. HEIGHT 1800mm
 - UNIT MASONRY THICKNESS 290mm - MAX. HEIGHT 2200mm
6. CONCRETE
 - MINIMUM CONCRETE STRENGTH SHALL BE 32Mpa W/ 5%-8% AIR ENTRAINMENT
 - CONCRETE SLAB THICKNESS 125mm
 - PROVIDE MIN. 30mm CLEAR CONCRETE COVER TO REINFORCING BARS



TITLE
CONCRETE PORCH & COLD CELLAR
PLANS, SECTIONS & NOTES

DWG. NO.
D02
2007