

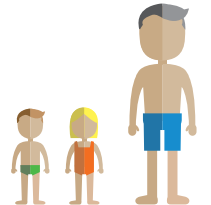
Admission Standards Policy

Admission Standards for public pools were developed by the Office of the Chief Coroner to assist lifeguards and assistant lifeguards in maintaining adequate surveillance over the whereabouts and the activities of young bathers. Guardians or group leaders (*must be 14 years or older*) are responsible for the children in their care while in the facility and must directly supervise the children at all times. The City of Welland defines direct supervision as in the water within arms reach and able to render immediate assistance.

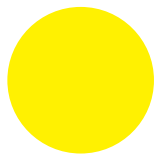


RED LEVEL

- Children **ages 0-6 years** and under
- Must swim with a guardian (*14+ years*)
- Must be within arms' reach at all times in the shallow end

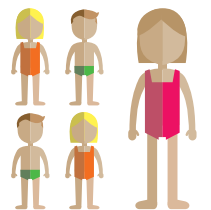


Ratio 2:1

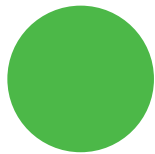


YELLOW LEVEL

- Children **ages 7, 8, 9, 10**
- Must swim with a guardian (*14+ years*)
- Must be within arm's reach at all times in the shallow end
- The ratio 8:1 will be applied if lifejackets are worn by ALL 8 children

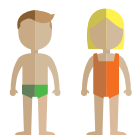


Ratio 4:1



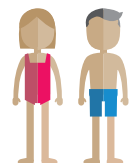
GREEN LEVEL

- Children **ages 7, 8, 9, 10**
- May swim without caregiver supervision if passed FST**



NO WRISTBAND REQUIRED

- Children **ages 11+**
- Unaccompanied
- At the lifeguard's discretion you may be asked to complete FST**



Please ask a lifeguard about the Facility Swim Test (FST)

Those with serious medical conditions should be accompanied by an individual knowledgeable of their condition. Please consult your physician before swimming and report all serious medical conditions to the lifeguarding staff before entering the pool.