

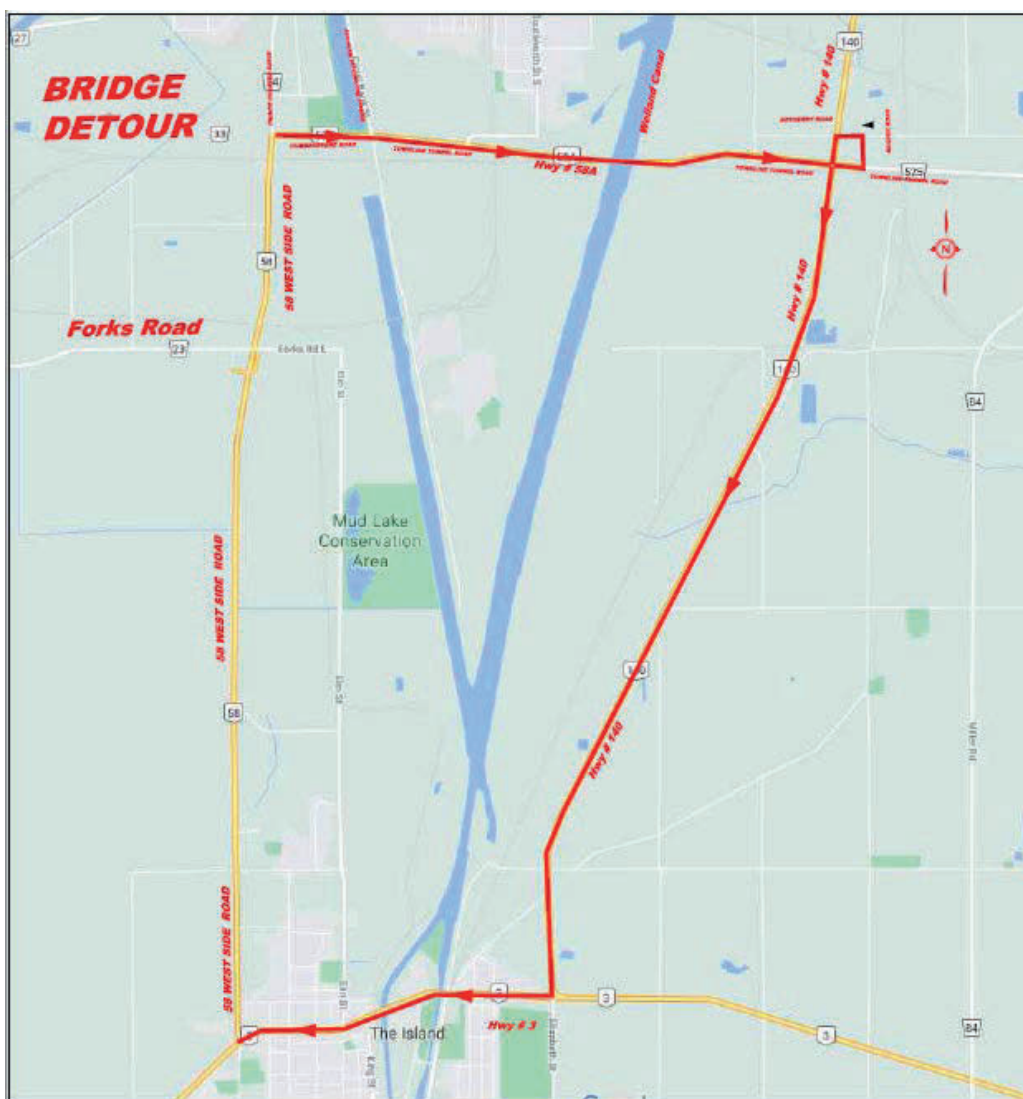


DETOUR TO START JUNE 17 AS SECTION OF HWY 58 CLOSED TO SOUTHBOUND TRAFFIC

Welland, ON – Starting Thursday, June 17, 2021, the bridge over the Canadian Pacific (CP) Railway on HWY 58, immediately south of HWY 58A/Townline Tunnel Road, is to undergo rehabilitation and is expected to be completed the end of August, 2021.

Southbound traffic coming from Prince Charles Drive will be rerouted to HWY 140 and detour signs will be posted. To help improve traffic flow for the detour route, temporary traffic lights have been installed at the intersection of Netherby Road and HWY 140. The bridge will be limited to northbound traffic only. We appreciate your patience and cooperation.

Visit <https://www.welland.ca/Traffic/Construction.asp>



– 30 –

Contact:

Livia McEachern
Manager of Engineering
City of Welland
905-735-1700 Ext. 2208
livia.mceachern@welland.ca

Richard Klodnicki
Project Manager, WSP
2nd Floor, 12 Ontario Street, Grimsby ON
905-309-6466
Highway3-58@wsp.com