

1110 HANSLER ROAD

THOROLD, ONTARIO

Industrial building for Lease

For more information, contact:

Joe Merrett*
Senior Sales Associate
T 905 315 3694
joe.merrett@cbre.com

Kimberley Piper*
Senior Sales Associate
T 905 315 3693
kimberley.piper@cbre.com

CB Richard Ellis Limited
5420 North Service Road
Suite 103
Burlington, ON, L7L 6C7
T 416 674 7900
F 905 319 0553

www.cbre.ca

*Sales Representative
**Broker



- Industrial building for Lease
- \$3.75 net per square foot
- 68,677 SF
- 25' clear height
- Office area includes testing labs and cafeteria
- 9.51 Acres
- 6 truck level, 2 drive-in doors
- The building is equipped with 1500 amp, 600 volt, three-phase four wire electrical service
- Taxes for 2007 \$75,544.70
- Prestigious industrial facility with easy access to 400 series Hwys and U.S. border

This disclaimer shall apply to CB Richard Ellis Limited, a real estate brokerage, and its Canadian affiliates, CB Richard Ellis Alberta Limited, CB Richard Ellis Manitoba Limited, CB Richard Ellis Advisory Services Inc., and CB Richard Ellis Québec Limitée (collectively "CBRE").

© 2008 CB Richard Ellis Limited. The information set out herein (the "Information") is intended for informational purposes only. CBRE has not verified the Information and does not represent, warrant or guarantee the accuracy, correctness and completeness of the Information. CBRE does not accept or assume any responsibility or liability of any kind in connection with the Information and the recipient's reliance upon the Information. The recipient of the Information should take such steps as the recipient may deem necessary to verify the Information prior to placing any reliance upon the Information. The Information may change and any property described in the Information may be withdrawn from the market at any time without notice or obligation to the recipient from CBRE.

CBRE
CB RICHARD ELLIS

1110 HANSLER ROAD

THOROLD, ONTARIO

Industrial building for Lease

For more information, contact:

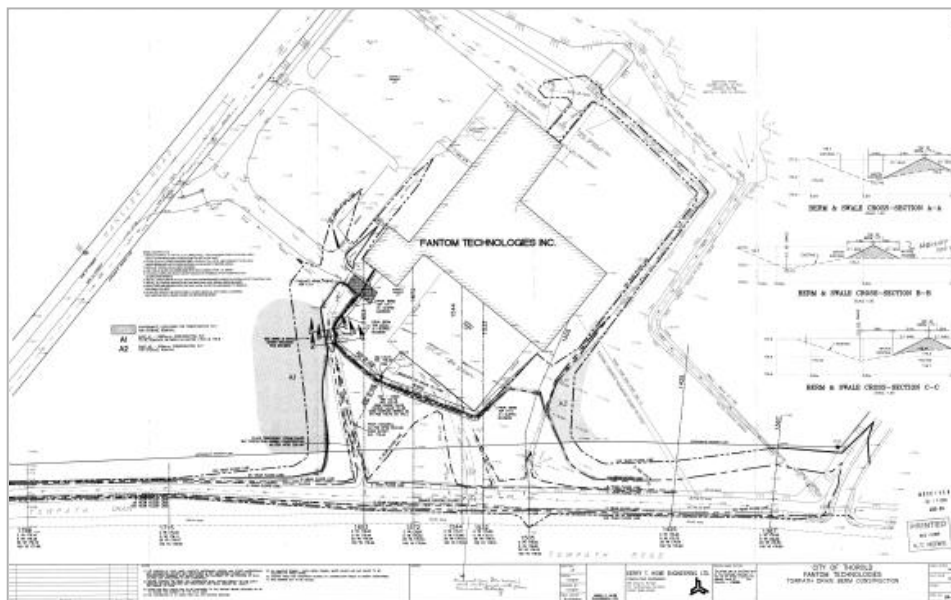
Joe Merrett*
Senior Sales Associate
T 905 315 3694
joe.merrett@cbre.com

Kimberley Piper*
Senior Sales Associate
T 905 315 3693
kimberley.piper@cbre.com

CB Richard Ellis Limited
5420 North Service Road
Suite 103
Burlington, ON, L7L 6C7
T 416 674 7900
F 905 319 0553

www.cbre.ca

*Sales Representative
**Broker



This disclaimer shall apply to CB Richard Ellis Limited, a real estate brokerage, and its Canadian affiliates, CB Richard Ellis Alberta Limited, CB Richard Ellis Manitoba Limited, CB Richard Ellis Advisory Services Inc., and CB Richard Ellis Québec Limitée (collectively "CBRE").

© 2008 CB Richard Ellis Limited. The information set out herein (the "Information") is intended for informational purposes only. CBRE has not verified the Information and does not represent, warrant or guarantee the accuracy, correctness and completeness of the Information. CBRE does not accept or assume any responsibility or liability of any kind in connection with the Information and the recipient's reliance upon the Information. The recipient of the Information should take such steps as the recipient may deem necessary to verify the Information prior to placing any reliance upon the Information. The Information may change and any property described in the Information may be withdrawn from the market at any time without notice or obligation to the recipient from CBRE.

CBRE
CB RICHARD ELLIS